



WILVORST

since 1916



WILVORST

*Green Wedding*

**TZIRCCO**



**at**  
atelier torino

STOCK SERVICE

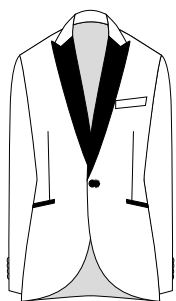
SALE 2024

**SALE**



**WILVORST**  
since 1916

MIX & MATCH



**SAKKO**  
JACKET

**C13661 -2**  
DROP 8

**SAKKOLÄNGE 73 CM**  
BACK LENGTH JACKET



**HOSE**  
TROUSERS

**C724**  
DROP 8

**FUßWEITE 38 CM**  
TROUSERS BOTTOM WIDTH



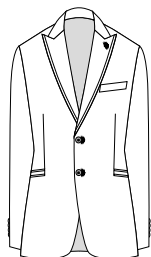
**471201/33**  
84 WO, 16 WM, 230 g





**WILVORST**  
since 1916

**MIX & MATCH**



**SAKKO**  
JACKET

**A10552 -2**  
DROP 8

SAKKOLÄNGE 72 CM  
BACK LENGTH JACKET



**HOSE**  
TROUSERS

**A724**  
DROP 8

FUßWEITE 38 CM  
TROUSERS BOTTOM WIDTH



**431104/40**  
99 WV, 1 EA, 240 g



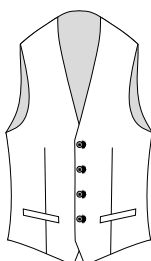
**437104/40**  
66 VI, 34 PL, 220 g



**437105/40**  
66 VI, 34 PL, 240 g



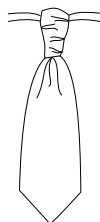
MIT TROTTOIR  
WITH TRIM



**WESTE**  
WAISTCOAT

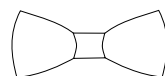
**A83**  
DROP 8

MIT STOFFRÜCKEN  
WITH CLOTH BACK



**PLASTRON & TUCH**  
NECKERCHIEF & POCKETK.

**A0622**



**SCHLEIFE & TUCH**  
BOW TIE & POCKETK.

**A0424**



**SCHLEIFE & TUCH**  
BOW TIE & POCKETK.

**A0431**



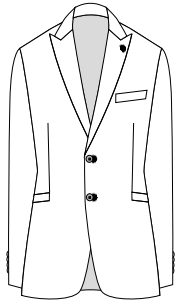
Zwischenverkauf vorbehalten Subject to prior sale

A02



**WILVORST**  
since 1916

**MIX & MATCH**



**SAKKO**  
JACKET

**A10272 -2**  
DROP 8

SAKKOLÄNGE 72 CM  
BACK LENGTH JACKET

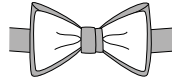
MIT FEINPASPEL  
WITH PIPING



**HOSE**  
TROUSERS

**A724**  
DROP 8

FUßWEITE 38 CM  
TROUSERS BOTTOM WIDTH



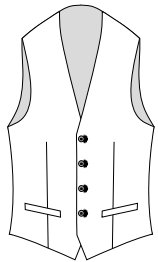
**SCHLEIFE & TUCH**  
BOW TIE & POCKET.

**A0432**

MIT KONTRAST ART. 437105/30  
WITH CONTRAST



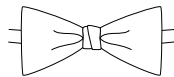
**431106/30**  
74 WV, 25 PL, 1 EA, 270 g



**WESTE**  
WAISTCOAT

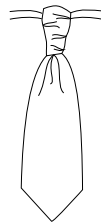
**A83**  
DROP 8

MIT STOFFRÜCKEN  
WITH CLOTH BACK



**SCHLEIFE & TUCH**  
BOW TIE & POCKET.

**A0424**



**PLASTRON & TUCH**  
NECKERCHIEF & POCKET.

**A0622**



**437105/30**  
66 VI, 34 PL, 240 g

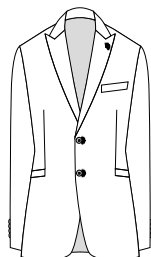


Zwischenverkauf vorbehalten Subject to prior sale



**WILVORST**  
since 1916

**MIX & MATCH**



**SAKKO**  
JACKET

**A10272 -2**  
DROP 8

SAKKOLÄNGE 72 CM  
BACK LENGTH JACKET

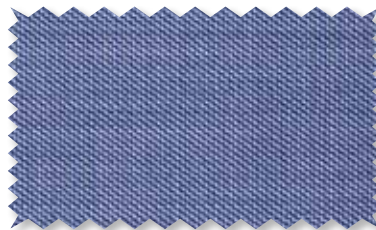
MIT FEINPASPEL  
WITH PIPING



**HOSE**  
TROUSERS

**A724**  
DROP 8

FUßWEITE 38 CM  
TROUSERS BOTTOM WIDTH



**401254/38**  
100 WO, 260 g



**417117/38**  
66 CV, 34 PES, 270 g

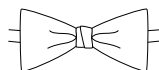


**404201/38**  
100 WO, 260 g



**WESTE**  
WAISTCOAT

**A87**  
DROP 8



**SCHLEIFE & TUCH**  
BOW TIE & POCKETK.

**A0424**



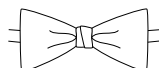
**PLASTRON & TUCH**  
NECKERCHIEF & POCKETK.

**A0622**



**WESTE**  
WAISTCOAT

**A28**  
DROP 8  
MIT STOFFRÜCKEN  
WITH CLOTH BACK



**SCHLEIFE & TUCH**  
BOW TIE & POCKETK.

**A0424**

Zwischenverkauf vorbehalten Subject to prior sale



**WILVORST**  
since 1916

**MIX & MATCH**



**SAKKO**  
JACKET

**A10452 -2**  
DROP 8

SAKKOLÄNGE 72 CM  
BACK LENGTH JACKET

MIT FEINPASPEL  
WITH PIPING



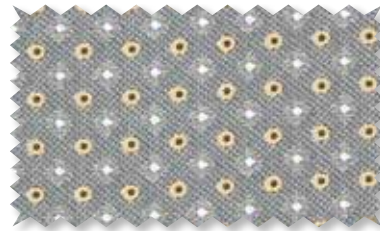
**HOSE**  
TROUSERS

**A724**  
DROP 8

FUßWEITE 38 CM  
TROUSERS BOTTOM WIDTH



**431105/30**  
97 WV, 2 PA, 1 EA, 265 g



**437106/60**  
100 PL, 188 g



**437107/60**  
100 PL, 218 g



**WESTE**  
WAISTCOAT

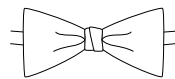
**A83**  
DROP 8

MIT STOFFRÜCKEN  
WITH CLOTH BACK



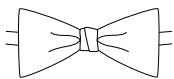
**PLASTRON & TUCH**  
NECKERCHIEF & POCKETK.

**A0622**



**SCHLEIFE & TUCH**  
BOW TIE & POCKETK.

**A0424**



**SCHLEIFE & TUCH**  
BOW TIE & POCKETK.

**A0424**



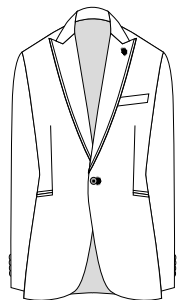
Zwischenverkauf vorbehalten Subject to prior sale

A09



**WILVORST**  
since 1916

**MIX & MATCH**



**SAKKO**  
JACKET

**A10281 -2**  
DROP 8

SAKKOLÄNGE 72 CM  
BACK LENGTH JACKET

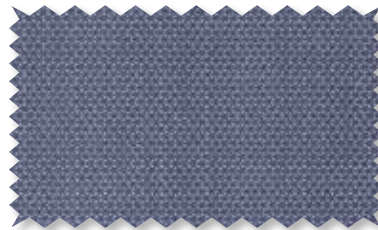
MIT TROTTOIR  
WITH TRIM



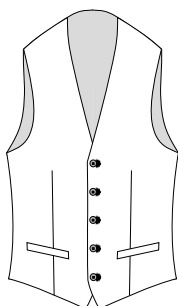
**Hose**  
TROUSERS

**A724**  
DROP 8

FußWEITE 38 CM  
TROUSERS BOTTOM WIDTH

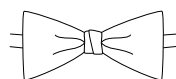


**411201/36**  
99 WO, 1 EL, 270 g



**WESTE**  
WAISTCOAT

**A87**  
DROP 8



**SCHLEIFE & TUCH**  
BOW TIE & POCKETK.

**A0424**



**PLASTRON & TUCH**  
NECKERCHIEF & POCKETK.

**A0622**



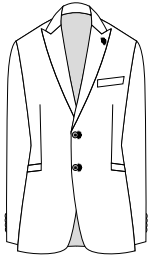
**417208/38**  
66 CV, 34 PES, 230 g





**WILVORST**  
since 1916

**MIX & MATCH**



**SAKKO**  
JACKET

**A10272 -2**  
DROP 8

SAKKOLÄNGE 72 CM  
BACK LENGTH JACKET

MIT FEINPASPEL  
WITH PIPING



**HOSE**  
TROUSERS

**A724**  
DROP 8

FUßWEITE 38 CM  
TROUSERS BOTTOM WIDTH



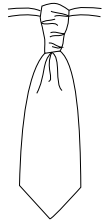
**431103/30**  
100 WV, 270 g



**WESTE**  
WAISTCOAT

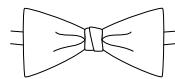
**A83**  
DROP 8

MIT STOFFRÜCKEN  
WITH CLOTH BACK



**PLASTRON & TUCH**  
NECKERCHIEF & POCKETK.

**A0622**



**SCHLEIFE & TUCH**  
BOW TIE & POCKETK.

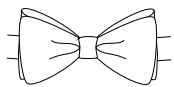
**A0424**



**437108/30**  
54 PL, 46 WV, 250 g



**437116/30**  
100 PL, 255 g



**SCHLEIFE & TUCH**  
BOW TIE & POCKETK.

**A0431**



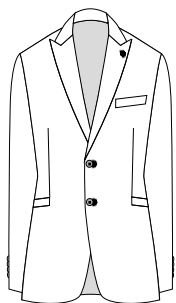
Zwischenverkauf vorbehalten Subject to prior sale





**WILVORST**  
since 1916

MIX & MATCH



**SAKKO**  
JACKET

**A10272 -2**  
DROP 8

**SAKKOLÄNGE 72 CM**  
BACK LENGTH JACKET

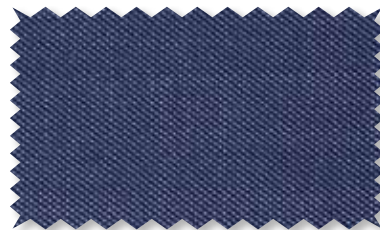
**MIT FEINPASPEL**  
WITH PIPING



**HOSE**  
TROUSERS

**A724**  
DROP 8

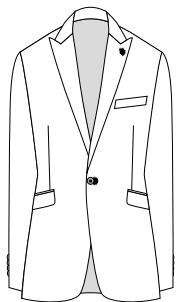
**FUßWEITE 38 CM**  
TROUSERS BOTTOM WIDTH



**411200/36**  
100 WO, 260 g



MIX & MATCH



SAKKO  
JACKET

A13381 -2  
DROP 8

SAKKOLÄNGE 72 CM  
BACK LENGTH JACKET



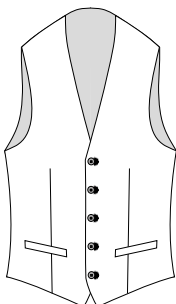
HOSE  
TROUSERS

A724  
DROP 8

FUßWEITE 38 CM  
TROUSERS BOTTOM WIDTH

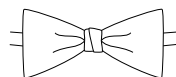


401101/21  
51 WO, 49 PES, 270 g



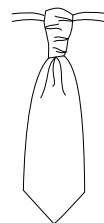
WESTE  
WAISTCOAT

A87  
DROP 8



SCHLEIFE & TUCH  
BOW TIE & POCKETK.

A0424



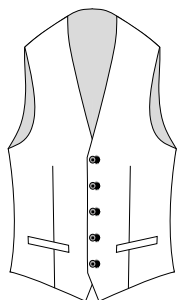
PLASTRON & TUCH  
NECKERCHIEF & POCKETK.

A0622

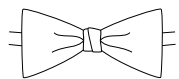


407118/65  
70 PES, 30 CV, 180 g





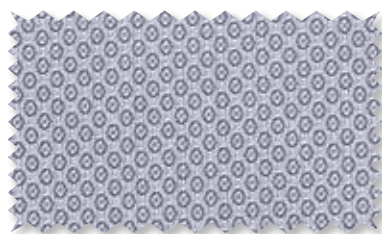
WESTE  
WAISTCOAT  
A70  
SLIM LINE



SCHLEIFE & TUCH  
BOW TIE & POCKETK.  
A0424



PLASTRON & TUCH  
NECKERCHIEF & POCKETK.  
A0612

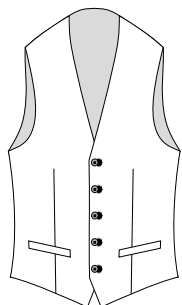


467207/37  
50 AC, 50 PL, 201 g



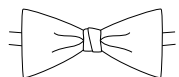


**WILVORST**  
since 1916



**WESTE**  
WAISTCOAT

**A70**  
SLIM LINE



**SCHLEIFE & TUCH**  
BOW TIE & POCKETK.

**A0424**



**PLASTRON & TUCH**  
NECKERCHIEF & POCKETK.

**A0622**



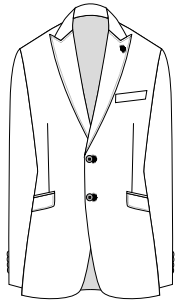
**497223/26**  
70 PL, 30 CV, 203 g





**WILVORST**  
*Green Wedding*

**MIX & MATCH**



**SAKKO**  
JACKET

**W10262 -2**  
DROP 8

SAKKOLÄNGE 72 CM  
BACK LENGTH JACKET

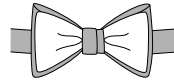
MIT AMF STEPPUNG  
WITH AMF STITCHING



**HOSE**  
TROUSERS

**W724**  
DROP 8

FUßWEITE 38 CM  
TROUSERS BOTTOM WIDTH



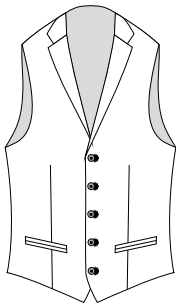
**SCHLEIFE & TUCH**  
BOW TIE & POCKETK.

**W0432**

MIT KONTRAST ART. 434101/30  
WITH CONTRAST



**431101/30**  
50 WV, 45 CO, 5 SE, 225 g



**WESTE**  
WAISTCOAT

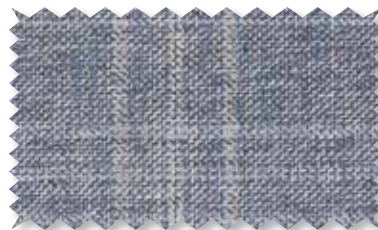
**W28**  
DROP 8

MIT STOFFRÜCKEN  
WITH CLOTH BACK



**SCHLEIFE & TUCH**  
BOW TIE & POCKETK.

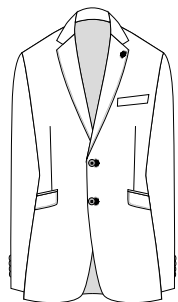
**W0431**



**434101/30**  
50 WV, 45 CO, 5 SE, 225 g



MIX & MATCH



SAKKO  
JACKET

W10342 -2  
DROP 8

SAKKOLÄNGE 72 CM  
BACK LENGTH JACKET

MIT AMF STEPPUNG  
WITH AMF STITCHING



HOSE  
TROUSERS

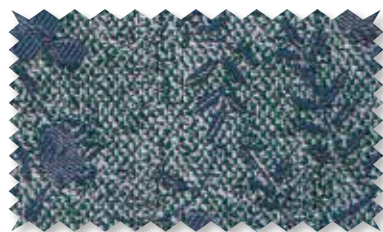
W724  
DROP 8

FUßWEITE 38 CM  
TROUSERS BOTTOM WIDTH



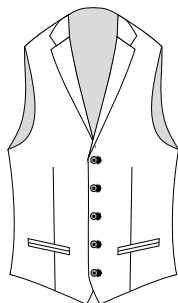
411204/44

50 WO, 40 CO, 10 LI, 240 g



417213/44

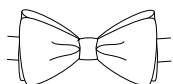
100 PL, 120 g



WESTE  
WAISTCOAT

W28  
DROP 8

MIT STOFFRÜCKEN  
WITH CLOTH BACK



SCHLEIFE & TUCH  
BOW TIE & POCKETK.

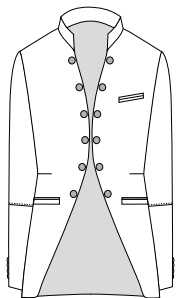
W0431



WILVORST  
*Green Wedding*



**MIX & MATCH**



**SAKKO**  
JACKET

**T26216 -2**  
ROYAL

SAKKOLÄNGE 73 CM  
BACK LENGTH JACKET

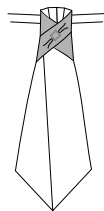


**HOSE**  
TROUSERS

**T512**  
ROYAL

FUßWEITE 38 CM  
TROUSERS BOTTOM WIDTH

MIT TUNNELBUND  
WITH SIDE ADJUSTERS



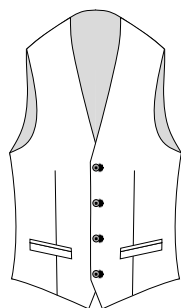
**PLASTRON & TUCH**  
NECKERCHIEF & POCKET.

**T0551**

MIT KONTRAST ART. 531101/60  
WITH CONTRAST



**531102/60**  
64 CO, 36 PES, 245 g



**WESTE**  
WAISTCOAT

**T54**  
ROYAL

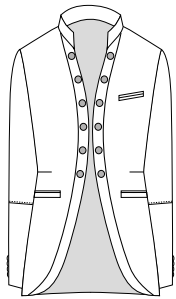
MIT STOFFRÜCKEN  
WITH CLOTH BACK



**531101/60**  
53 PES, 47 CO, 265 g



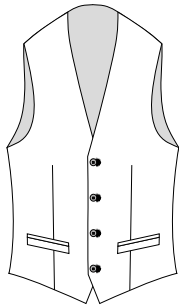
**MIX & MATCH**



**SAKKO**  
JACKET

**T26526 -2**  
ROYAL

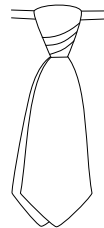
SAKKOLÄNGE 73 CM  
BACK LENGTH JACKET



**WESTE**  
WAISTCOAT

**T54**  
ROYAL

MIT STOFFRÜCKEN  
WITH CLOTH BACK



**PLASTRON & TUCH**  
NECKERCHIEF & POCKETK.

**T0512**



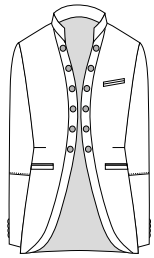
**521100/61**  
66 PES, 34 WO, 270 g



**SALE**



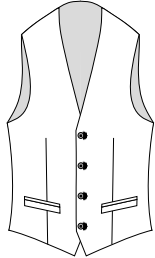
MIX & MATCH



**SAKKO**  
JACKET

**T26526 -2**  
ROYAL

SAKKOLÄNGE 73 CM  
BACK LENGTH JACKET



**WESTE**  
WAISTCOAT

**T54**  
ROYAL

MIT STOFFRÜCKEN  
WITH CLOTH BACK



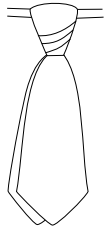
**511111/61**  
55 PES, 30 WO, 15 CO, 235 g



**561212/33**  
48 WO, 46 PES, 5 PA, 1 EL, 245 g



**561208/65**  
53 PES, 44 WO, 3 EL, 240 g



**PLASTRON & TUCH**  
NECKERCHIEF & POCKETK.

**T0512**



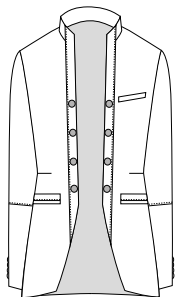
**Hose**  
TROUSERS

**T512**  
ROYAL

FUßWEITE 38 CM, MIT TUNNELBUND  
TROUSERS BOTTOM WIDTH, WITH SIDE ADJUSTERS

Zwischenverkauf vorbehalten Subject to prior sale

**MIX & MATCH**



**SAKKO**  
JACKET

**T26244 -2**  
ROYAL

**SAKKOLÄNGE 73 CM**  
BACK LENGTH JACKET

**MIT AMF STEPPUNG**  
WITH AMF STITCHING

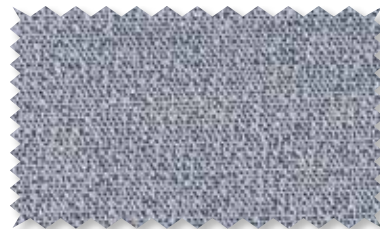


**HOSE**  
TROUSERS

**T512**  
ROYAL

**FUßWEITE 38 CM**  
TROUSERS BOTTOM WIDTH

**MIT TUNNELBUND**  
WITH SIDE ADJUSTERS



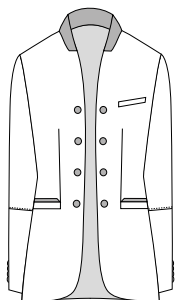
**511202/38**

35 CO, 34 PES, 24 WO, 6 PA, 1 EL, 212 g



**SALE**

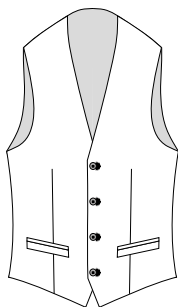
MIX & MATCH



**SAKKO**  
JACKET

**T26418 -2**  
ROYAL

SAKKOLÄNGE 73 CM  
BACK LENGTH JACKET



**WESTE**  
WAISTCOAT

**T54**  
ROYAL

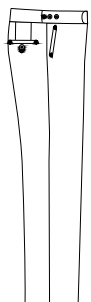
MIT STOFFRÜCKEN  
WITH CLOTH BACK



**531101/30**  
53 PES, 47 CO, 265 g



**SALE**

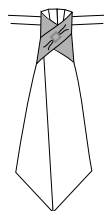


**HOSE**  
TROUSERS

**T512**  
ROYAL

FUßWEITE 38 CM  
TROUSERS BOTTOM WIDTH

MIT TUNNELBUND  
WITH SIDE ADJUSTERS



**PLASTRON & TUCH**  
NECKERCHIEF & POCKETR.

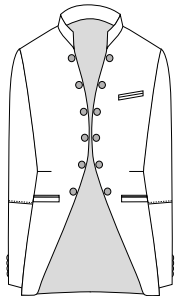
**T0551**

MIT KONTRAST ART. 531101/30  
WITH CONTRAST



**531102/30**  
64 CO, 36 PES, 245 g

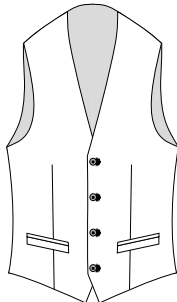
**MIX & MATCH**



**SAKKO**  
JACKET

**T26216 -2**  
ROYAL

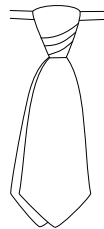
**SAKKOLÄNGE 73 CM**  
BACK LENGTH JACKET



**WESTE**  
WAISTCOAT

**T54**  
ROYAL

**MIT STOFFRÜCKEN**  
WITH CLOTH BACK



**PLASTRON & TUCH**  
NECKERCHIEF & POCKETK.

**T0512**

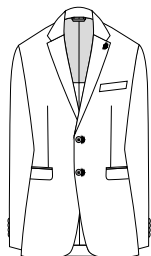


**531103/30**  
64 CO, 23 CV, 13 SE, 240 g



**SALE**

MIX & MATCH



SAKKO  
JACKET

L38852  
DROP 8

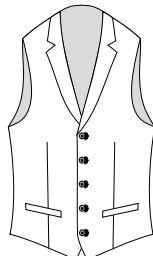
SAKKOLÄNGE 72 CM  
BACK LENGTH JACKET



HOSE  
TROUSERS

L322  
DROP 8

FUßWEITE 37 CM  
TROUSERS BOTTOM WIDTH



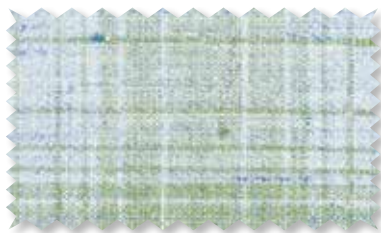
WESTE  
WAISTCOAT

LG5  
DROP 8

MIT STOFFRÜCKEN  
WITH CLOTH BACK



821779/40  
84 LI, 15 LY, 1 EA, 270 g



821986/40  
100 LI, 270 g



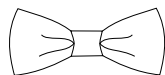
821779/30  
84 LI, 15 LY, 1 EA, 270 g



WESTE  
WAISTCOAT

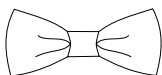
LG5  
DROP 8

MIT STOFFRÜCKEN  
WITH CLOTH BACK



SCHLEIFE & TUCH  
BOW TIE & POCKETK.

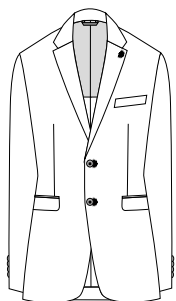
L03424



SCHLEIFE & TUCH  
BOW TIE & POCKETK.

L03424

MIX & MATCH



SAKKO  
JACKET

L38852  
DROP 8

SAKKOLÄNGE 72 CM  
BACK LENGTH JACKET

AMF KANTE M  
AMF STITCHING



Hose  
TROUSERS

L322  
DROP 8

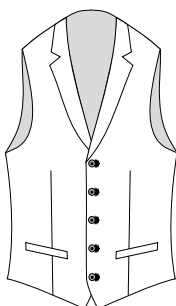
FUßWEITE 37 CM  
TROUSERS BOTTOM WIDTH



811773/40  
51 CO, 49 LI, 260 g



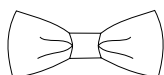
811978/40  
45 CO, 33 LI, 22 WV, 290 g



WESTE  
WAISTCOAT

LG5  
DROP 8

MIT STOFFRÜCKEN  
WITH CLOTH BACK



SCHLEIFE & TUCH  
BOW TIE & POCKETK.

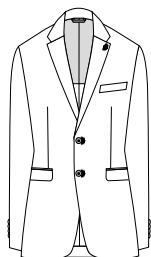
L03424



at  
atelier torino

SALE

MIX & MATCH



SAKKO  
JACKET

L38852  
DROP 8

SAKKOLÄNGE 72 CM  
BACK LENGTH JACKET

AMF KANTE M  
AMF STITCHING



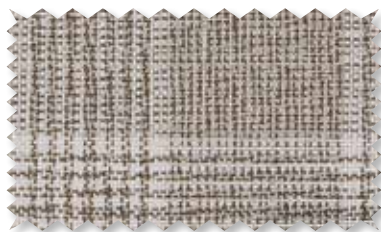
HOSE  
TROUSERS

L322  
DROP 8

FUßWEITE 37 CM  
TROUSERS BOTTOM WIDTH



801774/80  
55 WV, 45 LI, 250 g



801980/60  
55 WV, 45 LI, 250 g



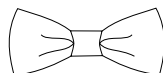
834700/80  
60 CO, 40 PL, 210 g



WESTE  
WAISTCOAT

LG2  
DROP 8

MIT STOFFRÜCKEN  
WITH CLOTH BACK



SCHLEIFE & TUCH  
BOW TIE & POCKETK.

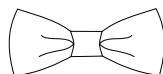
L03424



WESTE  
WAISTCOAT

LG5  
DROP 8

MIT STOFFRÜCKEN  
WITH CLOTH BACK



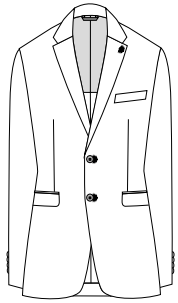
SCHLEIFE & TUCH  
BOW TIE & POCKETK.

L03424



Zwischenverkauf vorbehalten Subject to prior sale

MIX & MATCH



SAKKO  
JACKET

L38852  
DROP 8

SAKKOLÄNGE 72 CM  
BACK LENGTH JACKET



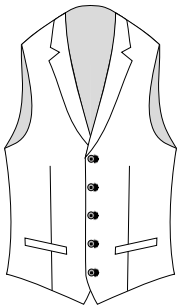
HOSE  
TROUSERS

L322  
DROP 8

FUßWEITE 37 CM  
TROUSERS BOTTOM WIDTH

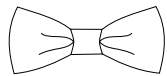


821770/80  
45 CO, 33 LI, 22 WV, 290 g



WESTE  
WAISTCOAT

LG5  
DROP 8



SCHLEIFE & TUCH  
BOW TIE & POCKETK.

L03424

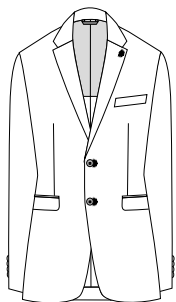


821981/80  
45 CO, 33 LI, 22 WV, 290 g





MIX & MATCH



SAKKO  
JACKET

L38852  
DROP 8

SAKKOLÄNGE 72 CM  
BACK LENGTH JACKET



HOSE  
TROUSERS

L322  
DROP 8

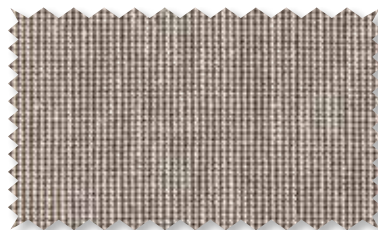
FUßWEITE 37 CM  
TROUSERS BOTTOM WIDTH



SCHLEIFE & TUCH  
BOW TIE & POCKETK.

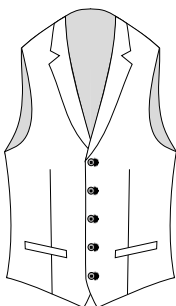
L03432

MIT KONTRAST ART. 831903/60  
WITH CONTRAST



831702/60

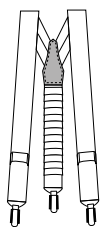
60 PL, 26 VI, 12 LI, 2 EA, 320 g



WESTE  
WAISTCOAT

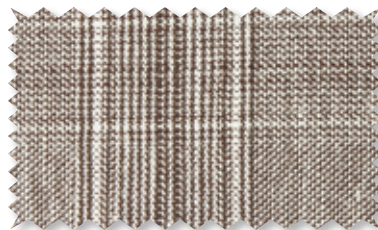
LG5  
DROP 8

MIT STOFFRÜCKEN  
WITH CLOTH BACK



HOSENTRÄGER  
BRACES

L0872



831903/60

60 PL, 26 VI, 12 LI, 2 EA, 320 g



MIX & MATCH



SAKKO  
JACKET

L38952  
DROP 8

SAKKOLÄNGE 72 CM  
BACK LENGTH JACKET



HOSE  
TROUSERS

L311  
DROP 8

FUßWEITE 36 CM  
TROUSERS BOTTOM WIDTH



821771/30  
74 WV, 24 CO, 2 EA, 260 g



WESTE  
WAISTCOAT

LG5  
DROP 8

MIT STOFFRÜCKEN  
WITH CLOTH BACK



SCHLEIFE & TUCH  
BOW TIE & POCKETK.

L03424



821776/50  
41 PL, 39 AC, 20 PA, 290 g

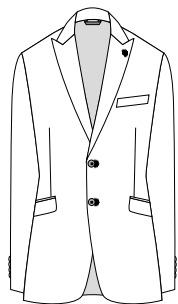


SCHLEIFE &  
TUCH  
BOW TIE & POCKETK.

L03424



MIX & MATCH



SAKKO  
JACKET

L38082  
DROP 8

SAKKOLÄNGE 72 CM  
BACK LENGTH JACKET

AMF KANTE M  
AMF STITCHING



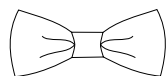
HOSE  
TROUSERS

L322  
DROP 8

FUßWEITE 37 CM  
TROUSERS BOTTOM WIDTH



811770/30  
38 WV, 58 VI, 4 EA, 290 g



SCHLEIFE & TUCH  
BOW TIE & POCKETK.

L03424



atelier torino





**WILVORST**

since 1916

DESIGNED WITH  IN NORTHEIM



INFO@WILVORST.DE



+49 5551 701 227



WWW.WILVORST.DE | B2B.WILVORST.DE | BILDER.WILVORST.DE | STYLEMANAGER.WILVORST.NET

WILVORST HERRENMODEN GMBH  
STETTINER STR. 6-8  
37154 NORTHEIM, GERMANY



1. Öffne die  App
2. Wechsle zur  Leiste
3. Tippe auf , um zu scannen