



WILVORST

since 1916



STOCK

SERVICE

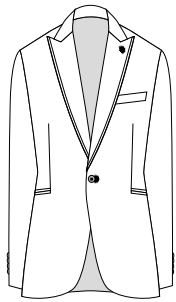
HOTLINE 2024





WILVORST
since 1916

MIX & MATCH



SAKKO
JACKET

A10281 -2
DROP 8

SAKKOLÄNGE 72 CM
BACK LENGTH JACKET

MIT TROTTOIR
WITH TRIM



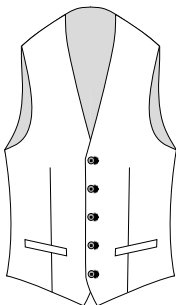
Hose
TROUSERS

A724
DROP 8

FUßWEITE 38 CM
TROUSERS BOTTOM WIDTH

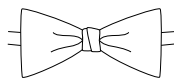


421206/46
51 CV, 47 WO, 2 EL, 265 g



WESTE
WAISTCOAT

A87
DROP 8



SCHLEIFE & TUCH
BOW TIE & POCKET.

A0424



PLASTRON & TUCH
NECKERCHIEF & POCKET.

A0622



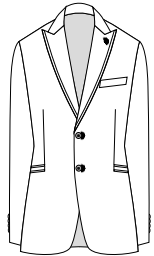
427200/47
70 PL, 30 CV, 200 g





WILVORST
since 1916

MIX & MATCH



SAKKO
JACKET

A10552 -2
DROP 8

SAKKOLÄNGE 72 CM
BACK LENGTH JACKET



HOSE
TROUSERS

A724
DROP 8

FUßWEITE 38 CM
TROUSERS BOTTOM WIDTH



431104/40
99 WO, 1 EL, 240 g

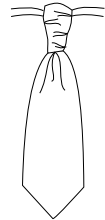
MIT TROTTOIR
WITH TRIM



WESTE
WAISTCOAT

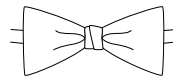
A83
DROP 8

MIT STOFFRÜCKEN
WITH CLOTH BACK



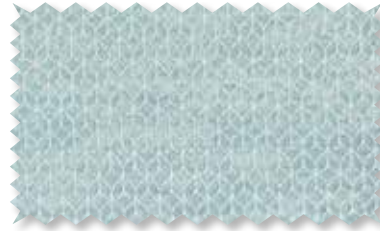
PLASTRON & TUCH
NECKERCHIEF & POCKETK.

A0622



SCHLEIFE & TUCH
BOW TIE & POCKETK.

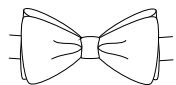
A0424



437104/40
66 CV, 34 PL, 220 g



437105/40
66 CV, 34 PL, 240 g



SCHLEIFE & TUCH
BOW TIE & POCKETK.

A0431



Größen sizes 46-62 | 94-114 | 25-28

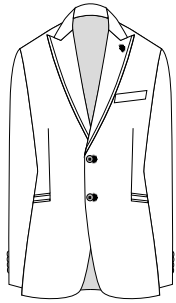
Zwischenverkauf vorbehalten Subject to prior sale

A02



WILVORST
since 1916

MIX & MATCH

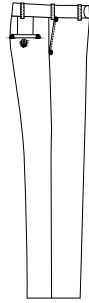


SAKKO
JACKET

A10552 -2
DROP 8

SAKKOLÄNGE 72 CM
BACK LENGTH JACKET

MIT TROTTOIR
WITH TRIM



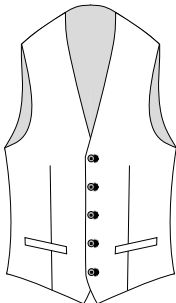
HOSE
TROUSERS

A724
DROP 8

FUßWEITE 38 CM
TROUSERS BOTTOM WIDTH

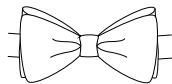


401254/45
100 WO, 260 g



WESTE
WAISTCOAT

A87
DROP 8



SCHLEIFE & TUCH
BOW TIE & POCKETK.

A0431



PLASTRON & TUCH
NECKERCHIEF & POCKETK.

A0622



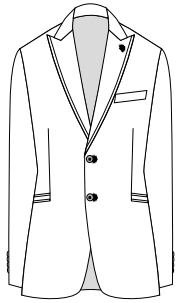
427111/43
100 PL, 105 g





WILVORST
since 1916

MIX & MATCH



SAKKO
JACKET

A10552 -2
DROP 8

SAKKOLÄNGE 72 CM
BACK LENGTH JACKET

MIT TROTTOIR
WITH TRIM



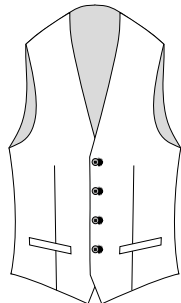
Hose
TROUSERS

A724
DROP 8

FUßWEITE 38 CM
TROUSERS BOTTOM WIDTH



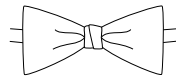
401254/44
100 WO, 260 g



WESTE
WAISTCOAT

A83
DROP 8

MIT STOFFRÜCKEN
WITH CLOTH BACK



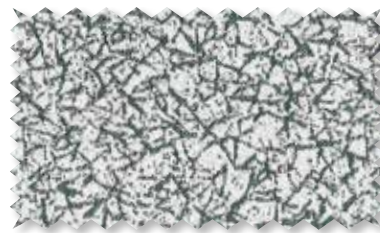
SCHLEIFE & TUCH
BOW TIE & POCKETK.

A0424



PLASTRON & TUCH
NECKERCHIEF & POCKETK.

A0612



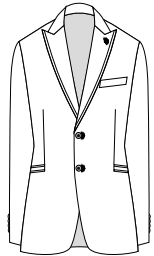
437109/40
100 PL, 124 g





WILVORST
since 1916

MIX & MATCH



SAKKO
JACKET

A10552 -2
DROP 8

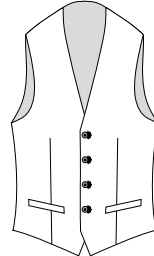
SAKKOLÄNGE 72 CM
BACK LENGTH JACKET



HOSE
TROUSERS

A724
DROP 8

FUßWEITE 38 CM
TROUSERS BOTTOM WIDTH



WESTE
WAISTCOAT

A83
DROP 8

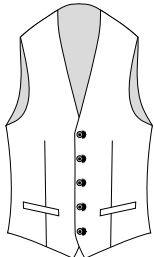
MIT STOFFRÜCKEN
WITH CLOTH BACK



421206/40
51 CV, 47 WO, 2 EL, 265 g



MIT TROTTOIR
WITH TRIM



WESTE
WAISTCOAT

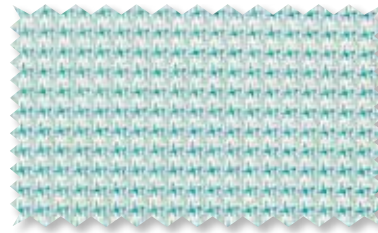
A87
DROP 8



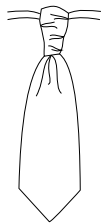
PLASTRON & TUCH
NECKERCHIEF & POCKETK.

A0632

MIT KONTRAST ART. 421206/40
WITH CONTRAST

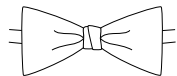


437116/40
100 PL, 255 g



PLASTRON & TUCH
NECKERCHIEF & POCKETK.

A0622



SCHLEIFE & TUCH
BOW TIE & POCKETK.

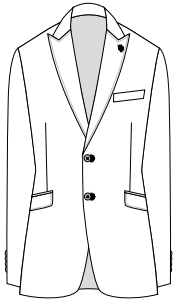
A0424

Größen sizes 46-62 | 94-114 | 25-28

Zwischenverkauf vorbehalten Subject to prior sale

A04

MIX & MATCH



SAKKO
JACKET

B10262 -2
DROP 8

SAKKOLÄNGE 72 CM
BACK LENGTH JACKET

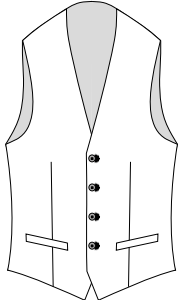
MIT AMF STEPPUNG
WITH AMF STITCHING



HOSE
TROUSERS

B724
DROP 8

FUßWEITE 38 CM
TROUSERS BOTTOM WIDTH



WESTE
WAISTCOAT

B83
DROP 8

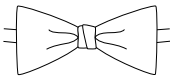
MIT STOFFRÜCKEN
WITH CLOTH BACK



941100/40
100 WO, 250 g



947104/43
66 CV, 34 PL, 200 g



SCHLEIFE & TUCH
BOW TIE & POCKET

B0424

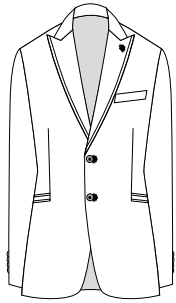


LIMITED STOCK



WILVORST
since 1916

MIX & MATCH



SAKKO
JACKET

A10552 -2
DROP 8

SAKKOLÄNGE 72 CM
BACK LENGTH JACKET

MIT TROTTOIR
WITH TRIM



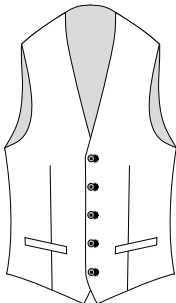
HOSE
TROUSERS

A724
DROP 8

FUßWEITE 38 CM
TROUSERS BOTTOM WIDTH

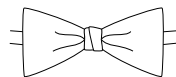


441102/42
88 WO, 4 PA, 4 EL, 280 g



WESTE
WAISTCOAT

A87
DROP 8



SCHLEIFE & TUCH
BOW TIE & POCKETK.

A0424



PLASTRON & TUCH
NECKERCHIEF & POCKETK.

A0612



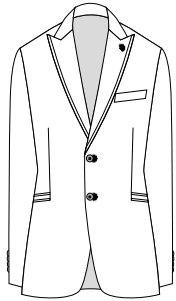
447108/42
100 PL, 173 g





WILVORST
since 1916

MIX & MATCH



SAKKO
JACKET

A15552 -2
MODERN FIT

SAKKOLÄNGE 74 CM
BACK LENGTH JACKET

MIT TROTTOIR
WITH TRIM



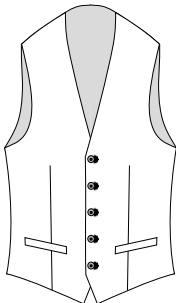
Hose
TROUSERS

A224
MODERN FIT

FUßWEITE 38 CM
TROUSERS BOTTOM WIDTH

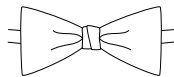


421206/68
51 CV, 47 WO, 2 EL, 265 g



WESTE
WAISTCOAT

A70
MODERN FIT



SCHLEIFE & TUCH
BOW TIE & POCKETK.

A0424



PLASTRON & TUCH
NECKERCHIEF & POCKETK.

A0612



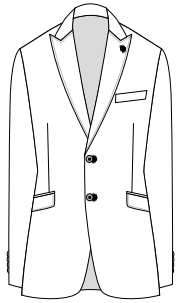
447104/68
70 PL, 30 WO, 200 g





WILVORST
since 1916

MIX & MATCH



SAKKO
JACKET

A10262 -2
DROP 8

SAKKOLÄNGE 72 CM
BACK LENGTH JACKET

MIT AMF STEPPUNG
WITH AMF STITCHING



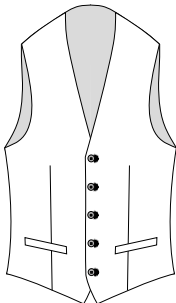
Hose
TROUSERS

A724
DROP 8

FUßWEITE 38 CM
TROUSERS BOTTOM WIDTH

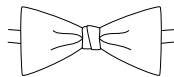


421206/65
51 CV, 47 WO, 2 EL, 265 g



WESTE
WAISTCOAT

A87
DROP 8



SCHLEIFE & TUCH
BOW TIE & POCKETK.

A0424



PLASTRON & TUCH
NECKERCHIEF & POCKETK.

A0612



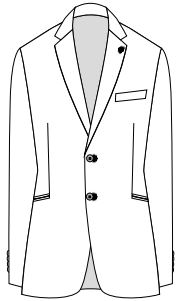
427201/66
66 CV, 34 PL, 250 g





WILVORST
since 1916

MIX & MATCH



SAKKO
JACKET

A15012 -2
MODERN FIT

SAKKOLÄNGE 74 CM
BACK LENGTH JACKET

MIT FEINPASPEL
WITH PIPING



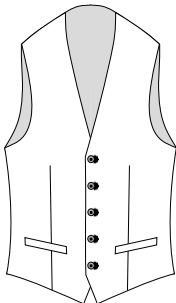
Hose
TROUSERS

A224
MODERN FIT

FUßWEITE 38 CM
TROUSERS BOTTOM WIDTH

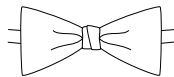


431204/64
54 WO, 43 CV, 3 EL, 255 g



WESTE
WAISTCOAT

A70
MODERN FIT



SCHLEIFE & TUCH
BOW TIE & POCKET.

A0424



PLASTRON & TUCH
NECKERCHIEF & POCKET.

A0612



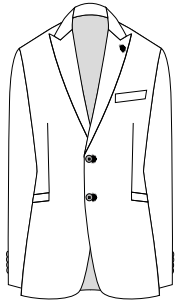
447106/64
100 PL, 209 g





WILVORST
since 1916

MIX & MATCH



SAKKO
JACKET

A10272 -2
DROP 8

SAKKOLÄNGE 72 CM
BACK LENGTH JACKET

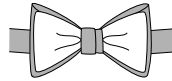
MIT FEINPASPEL
WITH PIPING



HOSE
TROUSERS

A724
DROP 8

FUßWEITE 38 CM
TROUSERS BOTTOM WIDTH



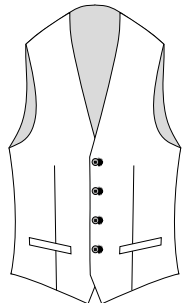
SCHLEIFE & TUCH
BOW TIE & POCKETK.

A0432

MIT KONTRAST ART. 437105/30
WITH CONTRAST



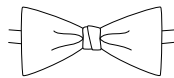
431106/30
74 WO, 25 PL, 1 EL, 270 g



WESTE
WAISTCOAT

A83
DROP 8

MIT STOFFRÜCKEN
WITH CLOTH BACK



SCHLEIFE & TUCH
BOW TIE & POCKETK.

A0424



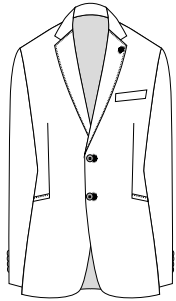
437105/30
66 CV, 34 PL, 240 g





WILVORST
since 1916

MIX & MATCH



SAKKO
JACKET

A10022 -2
DROP 8

SAKKOLÄNGE 72 CM
BACK LENGTH JACKET

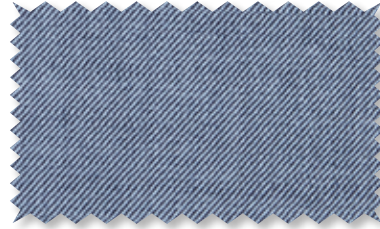
MIT AMF STEPPUNG
WITH AMF STITCHING



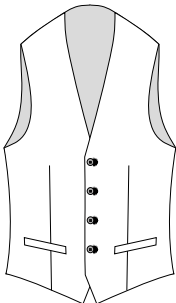
Hose
TROUSERS

A724
DROP 8

FUßWEITE 38 CM
TROUSERS BOTTOM WIDTH



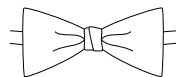
441100/36
52 CV, 46 WO, 2 EL, 320 g



WESTE
WAISTCOAT

A83
DROP 8

MIT STOFFRÜCKEN
WITH CLOTH BACK



SCHLEIFE & TUCH
BOW TIE & POKETK.

A0424



PLASTRON & TUCH
NECKERCHIEF & POKETK.

A0612



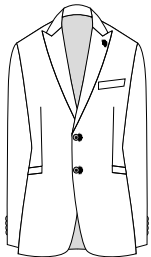
447107/36
100 PL, 255 g





WILVORST
since 1916

MIX & MATCH



SAKKO
JACKET

A10272 -2
DROP 8

SAKKOLÄNGE 72 CM
BACK LENGTH JACKET

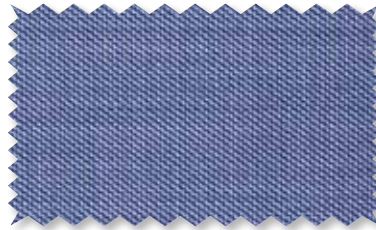
MIT FEINPASPEL
WITH PIPING



HOSE
TROUSERS

A724
DROP 8

FußWEITE 38 CM
TROUSERS BOTTOM WIDTH



401254/38
100 WO, 260 g



417117/38
66 CV, 34 PL, 270 g

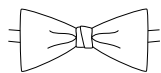


404201/38
100 WO, 260 g



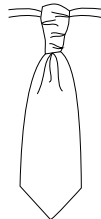
WESTE
WAISTCOAT

A87
DROP 8



SCHLEIFE & TUCH
BOW TIE & POCKETK.

A0424



PLASTRON & TUCH
NECKERCHIEF & POCKETK.

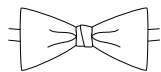
A0622



WESTE
WAISTCOAT

A28
DROP 8

MIT STOFFRÜCKEN
WITH CLOTH BACK



SCHLEIFE & TUCH
BOW TIE & POCKETK.

A0424

Größen sizes 46-62 | 94-114 | 25-28

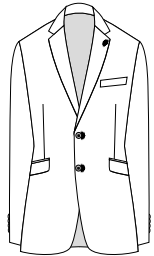
Zwischenverkauf vorbehalten Subject to prior sale

A08



WILVORST
since 1916

MIX & MATCH



SAKKO
JACKET

A10452 -2
DROP 8

SAKKOLÄNGE 72 CM
BACK LENGTH JACKET

MIT FEINPASPEL
WITH PIPING



HOSE
TROUSERS

A724
DROP 8

FUßWEITE 38 CM
TROUSERS BOTTOM WIDTH



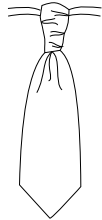
431105/30
97 WO, 2 PA, 1 EL, 265 g



WESTE
WAISTCOAT

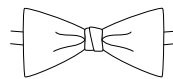
A83
DROP 8

MIT STOFFRÜCKEN
WITH CLOTH BACK



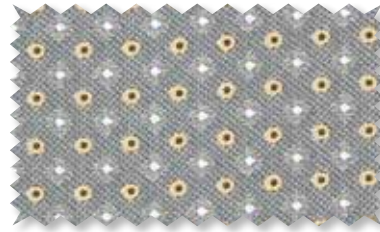
PLASTRON & TUCH
NECKERCHIEF & POCKETK.

A0622



SCHLEIFE & TUCH
BOW TIE & POCKETK.

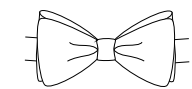
A0424



437106/60
100 PL, 188 g



437107/60
100 PL, 218 g



SCHLEIFE & TUCH
BOW TIE & POCKETK.

A0431

Größen sizes 46-62 | 94-114 | 25-28

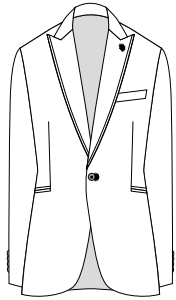
Zwischenverkauf vorbehalten Subject to prior sale

A09



WILVORST
since 1916

MIX & MATCH



SAKKO
JACKET

A10281 -2
DROP 8

SAKKOLÄNGE 72 CM
BACK LENGTH JACKET

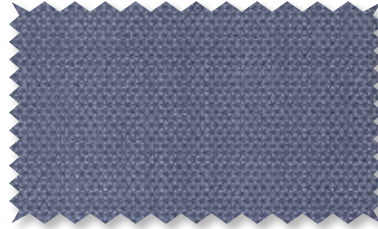
MIT TROTTOIR
WITH TRIM



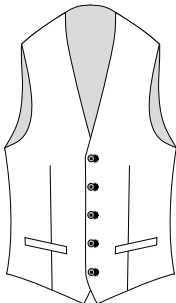
Hose
TROUSERS

A724
DROP 8

FUßWEITE 38 CM
TROUSERS BOTTOM WIDTH

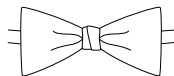


411201/36
99 WO, 1 EL, 270 g



WESTE
WAISTCOAT

A87
DROP 8



SCHLEIFE & TUCH
BOW TIE & POCKETK.

A0424



PLASTRON & TUCH
NECKERCHIEF & POCKETK.

A0622



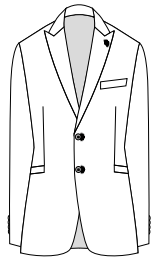
417208/38
66 CV, 34 PL, 230 g





WILVORST
since 1916

MIX & MATCH



SAKKO
JACKET

A10272 -2
DROP 8

SAKKOLÄNGE 72 CM
BACK LENGTH JACKET

MIT FEINPASPEL
WITH PIPING



HOSE
TROUSERS

A724
DROP 8

FUßWEITE 38 CM
TROUSERS BOTTOM WIDTH



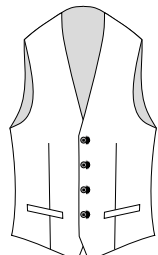
431103/30
100 WO, 270 g



437108/30
54 PL, 46 WO, 250 g



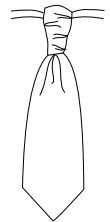
437116/30
100 PL, 255 g



WESTE
WAISTCOAT

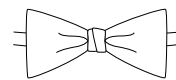
A83
DROP 8

MIT STOFFRÜCKEN
WITH CLOTH BACK



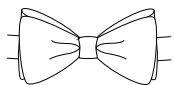
PLASTRON & TUCH
NECKERCHIEF & POKCKETK.

A0622



SCHLEIFE & TUCH
BOW TIE & POKCKETK.

A0424



SCHLEIFE & TUCH
BOW TIE & POKCKETK.

A0431

Größen sizes 46-62 | 94-114 | 25-28

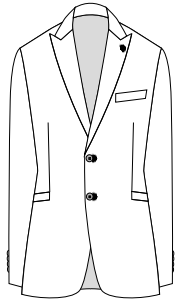
Zwischenverkauf vorbehalten Subject to prior sale

A11



WILVORST
since 1916

MIX & MATCH



SAKKO
JACKET

A10272 -2
DROP 8

SAKKOLÄNGE 72 CM
BACK LENGTH JACKET

MIT FEINPASPEL
WITH PIPING



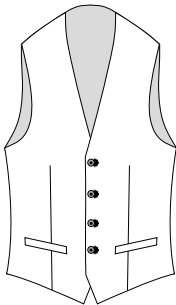
HOSE
TROUSERS

A724
DROP 8

FUßWEITE 38 CM
TROUSERS BOTTOM WIDTH

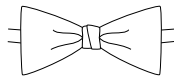


411200/36
100 WO, 260 g



WESTE
WAISTCOAT

A40
SLIM LINE



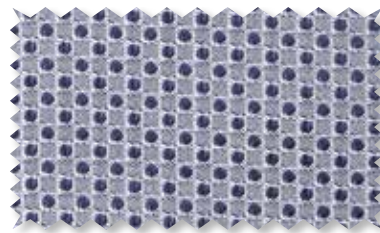
SCHLEIFE & TUCH
BOW TIE & POCKETK.

A0424



PLASTRON & TUCH
NECKERCHIEF & POCKETK.

A0622



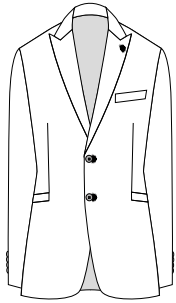
447102/34
50 AC, 50 PL, 201 g





WILVORST
since 1916

MIX & MATCH



SAKKO
JACKET

A10272 -2
DROP 8

SAKKOLÄNGE 72 CM
BACK LENGTH JACKET

MIT FEINPASPEL
WITH PIPING



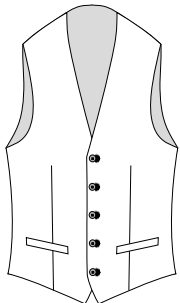
HOSE
TROUSERS

A724
DROP 8

FUßWEITE 38 CM
TROUSERS BOTTOM WIDTH

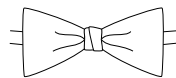


441102/34
88 WO, 8 PA, 4 EL, 280 g



WESTE
WAISTCOAT

A87
DROP 8



SCHLEIFE & TUCH
BOW TIE & POCKETK.

A0424



PLASTRON & TUCH
NECKERCHIEF & POCKETK.

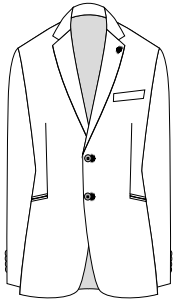
A0612



447108/34
100 PL, 173 g



MIX & MATCH



SAKKO
JACKET

B10012 -2
DROP 8

SAKKOLÄNGE 72 CM
BACK LENGTH JACKET

MIT FEINPASPEL
WITH PIPING



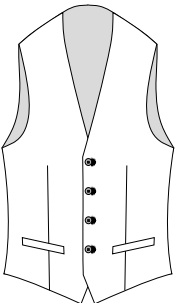
HOSE
TROUSERS

B724
DROP 8

FUßWEITE 38 CM
TROUSERS BOTTOM WIDTH



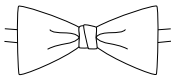
941101/32
75 WO, 25 SE, 250 g



WESTE
WAISTCOAT

B83
DROP 8

MIT STOFFRÜCKEN
WITH CLOTH BACK



SCHLEIFE & TUCH
BOW TIE & POCKET.

B0424



947101/32
80 SE, 20 PL, 220 g

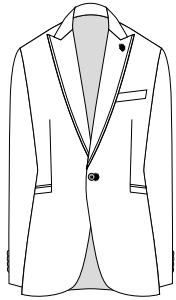


LIMITED STOCK



WILVORST
since 1916

MIX & MATCH



SAKKO
JACKET

A10011 -2
DROP 8

SAKKOLÄNGE 72 CM
BACK LENGTH JACKET

MIT TROTTOIR
WITH TRIM



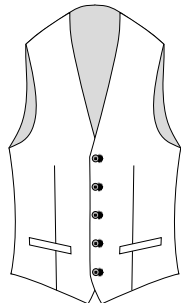
HOSE
TROUSERS

A724
DROP 8

FUßWEITE 38 CM
TROUSERS BOTTOM WIDTH

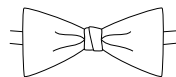


401254/56
100 WO, 260 g



WESTE
WAISTCOAT

A87
DROP 8



SCHLEIFE & TUCH
BOW TIE & POCKETK.

A0424



PLASTRON & TUCH
NECKERCHIEF & POCKETK.

A0612



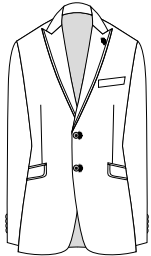
447103/54
100 PL, 145 g





WILVORST
since 1916

MIX & MATCH



SAKKO
JACKET

A10352 -2
DROP 8

SAKKOLÄNGE 72 CM
BACK LENGTH JACKET

MIT TROTTOIR
WITH TROTTOR



HOSE
TROUSERS

A724
DROP 8

FußWEITE 38 CM
TROUSERS BOTTOM WIDTH



401254/54
100 WO, 260 g



417120/55
66 CV, 34 PL, 282 g

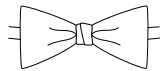


404201/54
100 WO, 260 g



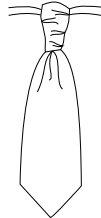
WESTE
WAISTCOAT

A87
DROP 8



SCHLEIFE & TUCH
BOW TIE & POCKETK.

A0424



PLASTRON & TUCH
NECKERCHIEF & POCKETK.

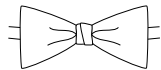
A0622



WESTE
WAISTCOAT

A28
DROP 8

MIT STOFFRÜCKEN
WITH CLOTH BACK



SCHLEIFE & TUCH
BOW TIE & POCKETK.

A0424

Größen sizes 46-62 | 94-114 | 25-28

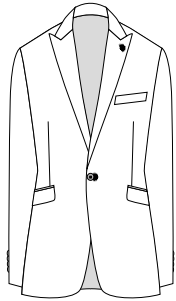
Zwischenverkauf vorbehalten Subject to prior sale

A14



WILVORST
since 1916

MIX & MATCH



SAKKO
JACKET

A13381 -2
DROP 8

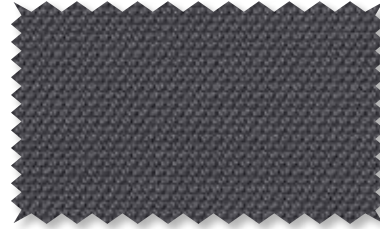
SAKKOLÄNGE 72 CM
BACK LENGTH JACKET



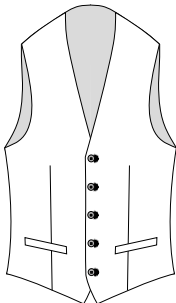
Hose
TROUSERS

A724
DROP 8

FußWEITE 38 CM
TROUSERS BOTTOM WIDTH

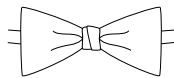


401101/21
51 WO, 49 PL, 270 g



WESTE
WAISTCOAT

A87
DROP 8



SCHLEIFE & TUCH
BOW TIE & POCKETK.

A0424



PLASTRON & TUCH
NECKERCHIEF & POCKETK.

A0622

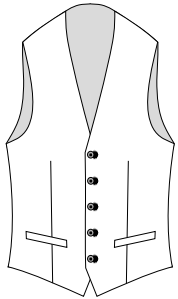


407118/65
70 PL, 30 CV, 180 g



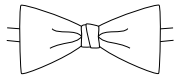


WILVORST
since 1916



WESTE
WAISTCOAT

A70
SLIM LINE



SCHLEIFE & TUCH
BOW TIE & POCKETK.

A0424



PLASTRON & TUCH
NECKERCHIEF & POCKETK.

A0612



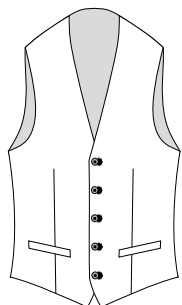
427207/81

70 CV, 30 PL, 200 g



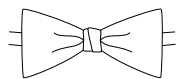


WILVORST
since 1916



WESTE
WAISTCOAT

A87
DROP 8



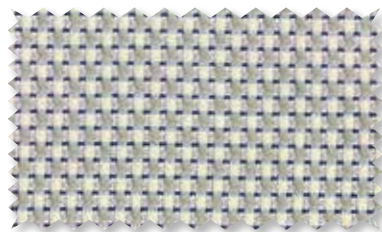
SCHLEIFE & TUCH
BOW TIE & POCKETK.

A0424



PLASTRON & TUCH
NECKERCHIEF & POCKETK.

A0622

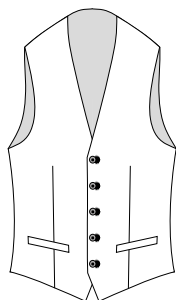


437111/60
70 PL, 30 CV, 200 g



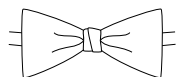


WILVORST
since 1916



WESTE
WAISTCOAT

A70
SLIM LINE



SCHLEIFE & TUCH
BOW TIE & POCKETK.

A0424



PLASTRON & TUCH
NECKERCHIEF & POCKETK.

A0622

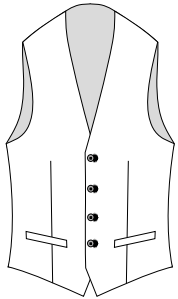


467205/85
66 CV, 34 PL, 270 g



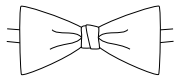


WILVORST
since 1916



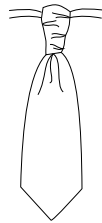
WESTE
WAISTCOAT

A40
SLIM LINE



SCHLEIFE & TUCH
BOW TIE & POKCKETK.

A0424



PLASTRON & TUCH
NECKERCHIEF & POKCKETK.

A0622

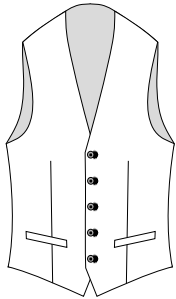


487122/38
66 CV, 34 PL, 260 g



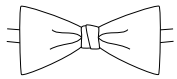


WILVORST
since 1916



WESTE
WAISTCOAT

A70
SLIM LINE



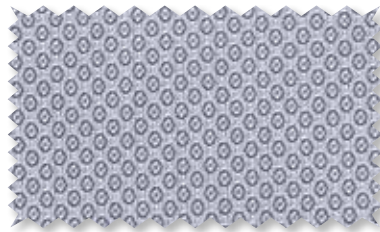
SCHLEIFE & TUCH
BOW TIE & POCKETK.

A0424



PLASTRON & TUCH
NECKERCHIEF & POCKETK.

A0612

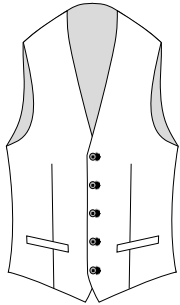


467207/37
50 AC, 50 PL, 201 g



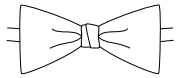


WILVORST
since 1916



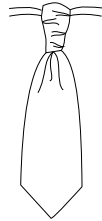
WESTE
WAISTCOAT

A87
DROP 8



SCHLEIFE & TUCH
BOW TIE & POCKETK.

A0424



PLASTRON & TUCH
NECKERCHIEF & POCKETK.

A0622

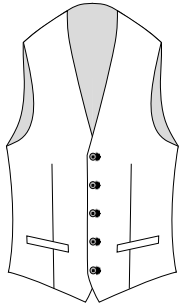


497116/38
66 CV, 34 PL, 255 g



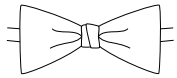


WILVORST
since 1916



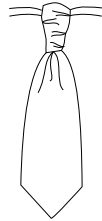
WESTE
WAISTCOAT

A87
DROP 8



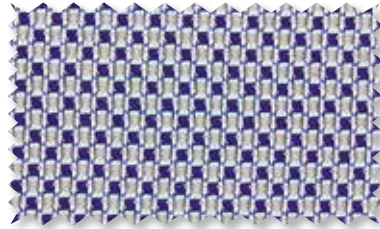
SCHLEIFE & TUCH
BOW TIE & POCKETK.

A0424



PLASTRON & TUCH
NECKERCHIEF & POCKETK.

A0622

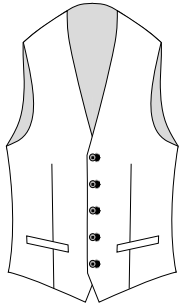


437111/30
70 PL,30 CV, 200 g



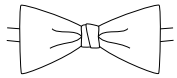


WILVORST
since 1916



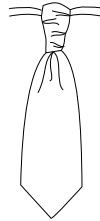
WESTE
WAISTCOAT

A70
SLIM LINE



SCHLEIFE & TUCH
BOW TIE & POCKETK.

A0424



PLASTRON & TUCH
NECKERCHIEF & POCKETK.

A0622



497223/26
70 PL, 30 CV, 203 g





WILVORST

since 1916

DESIGNED WITH  IN NORTHEIM



INFO@WILVORST.DE



+49 5551 701 227



WWW.WILVORST.DE | B2B.WILVORST.DE | BILDER.WILVORST.DE | STYLEMANAGER.WILVORST.NET

WILVORST HERRENMODEN GMBH
STETTINER STR. 6-8
37154 NORTHEIM, GERMANY



1. Öffne die  App
2. Wechsle zur  Leiste
3. Tippe auf , um zu scannen